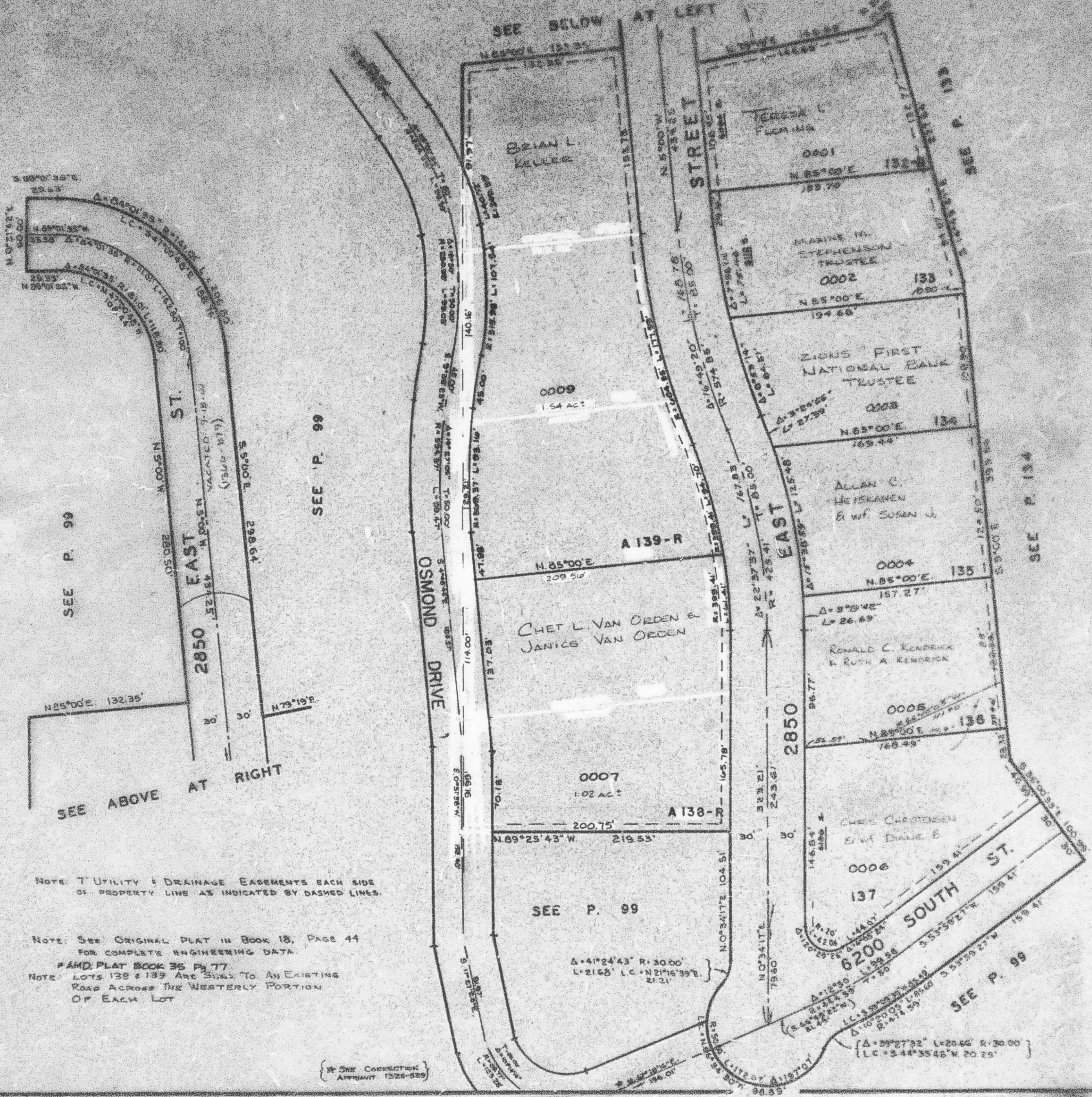


PART OF SW 1/4 OF SEC. 24, T.5N. R.1W. S.L.B.&M.
EASTWOOD SUBDIVISION NO. 8
 AMENDED PLAT AND LOTS A138-R & A139-R
 IN WEBER COUNTY

TAXING UNIT 159

PREFIX-97-100

SCALE 1" = 60'



NOTE: UTILITY & DRAINAGE EASEMENTS EACH SIDE OF PROPERTY LINE AS INDICATED BY DASHED LINES.

NOTE: SEE ORIGINAL PLAT IN BOOK 18, PAGE 44 FOR COMPLETE ENGINEERING DATA.

NOTE: LOTS 138 & 139 ARE SUBJECT TO AN EXISTING ROAD ACROSS THE WESTERLY PORTION OF EACH LOT

* SEE CORRECTION APPENDIX 1325-529